
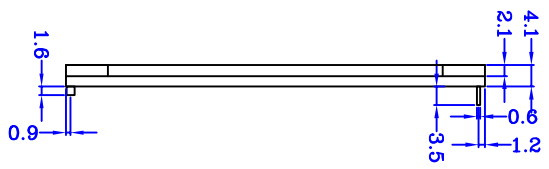
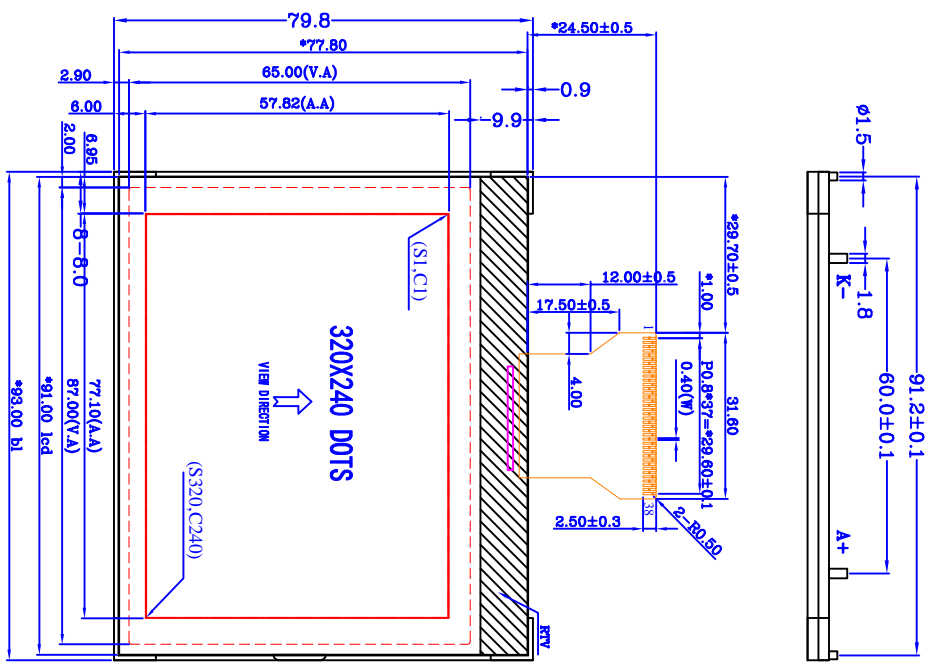


PIN NO.	SYMBOL	DESCRIPTION
1	NC	NC
2~17	D15~D0	DATA BUS
18~19	VSS	Ground
20	VPP	External power VPP is the power pin of embedded OTP
21~22	VCC	Power supply 3.3V
23	VDD	Digital core power and Connect them with the 1uF capacitor
24	CSB	Chip Select, low: chip enabled
25	IM1	[IM1:IM0]=0:0 88-system 16-bit bus interface
26	IM0	[IM1:IM0]=1:0 80-system 16-bit bus interface
27	EMRB	68-system: enable signal to activate data read/write operation. 80-system: write strobe signal and writes data at the low level.
28	RESETB	Reset pin, low active.
29	RS	Register select
30	RWRDB	68-system:select data read/write operation. Low: Write High: Read 80-system:read strobe signal and reads data at the low level
31	VOU1	VOU1 is the internal booster output(connected to VCC)
32	VOU2	VOU2 is the internal booster output(External power 30.0V)
33	V0	
34	V1	
35	V2	Built-in driver voltage sources output.
36	V3	connected by capacitors to GND , capacitor about 0.47uF-1.0uF
37	V4	
38	NC	NC

- NOTES:**
1. DISPLAY TYPE: FSTN
 2. POLARIZER TYPE: TRANSPARENT, POSITIVE
 3. VIEW DIRECTION: 6:00
 4. OPERATING TEMPERATURE: -20°C~+70°C
 5. STORAGE TEMPERATURE: -30°C~+80°C
 6. VDD: +3.3V
 7. DRIVE METHOD: 1/240DUTY, 1/13BIAS
 8. CONTROLLER: IST3086
 9. DRIVER: IST
 10. BACKLIGHT TYPE: WHITE

 WAYING (HONGKONG) SHARES LIMITED		DESIGN:	MODEL NUMBER:	UNITS:	MM
		CHECK:	WYM320240F1G	VERSION:	D
APPROVE:		SHEET:	1 OF 1		
Unspecified tolerances are ±0.3		DATE:	2016-11-08		



0.221	0.02	0.221	0.02
0.221	0.02	0.221	0.02