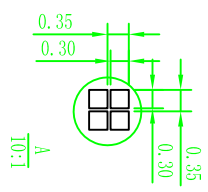
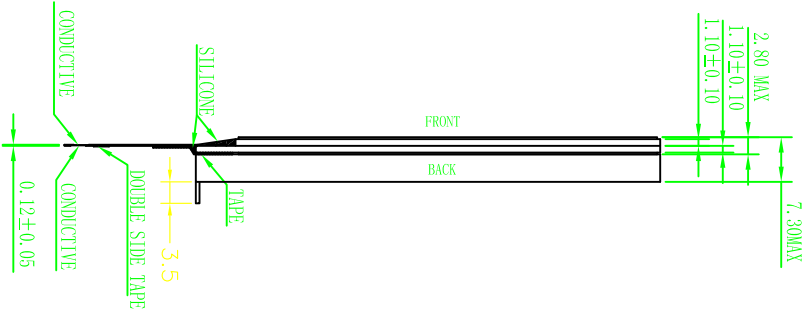
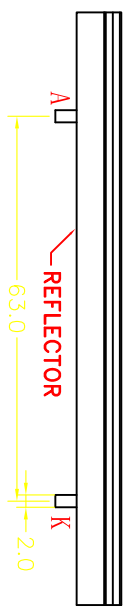
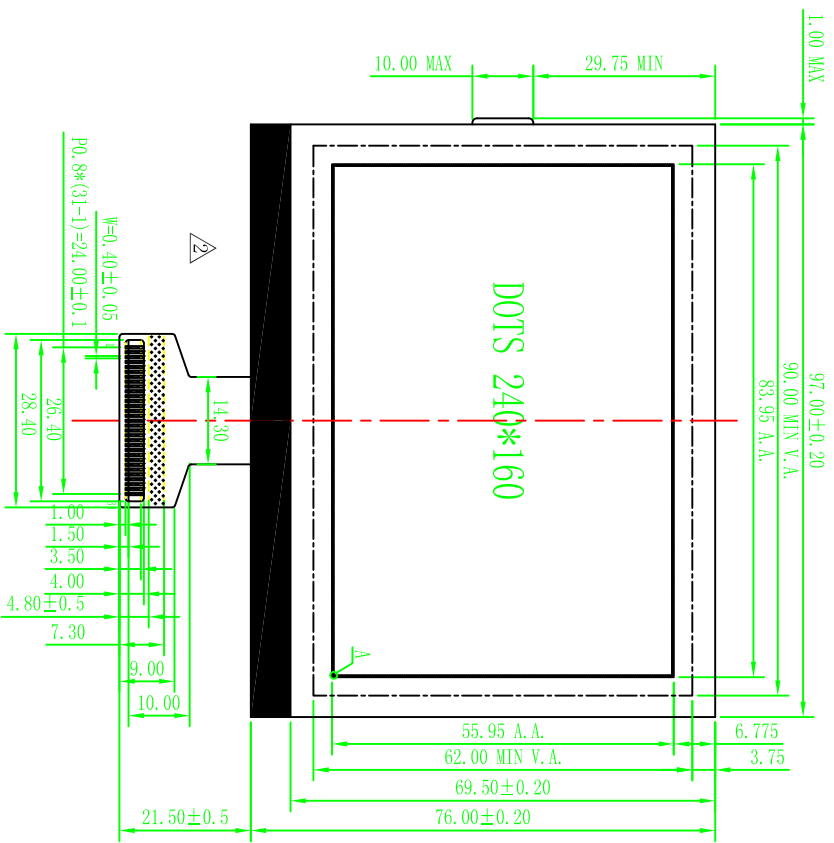


REV	REVISION RECORD	DATE
△	根据客户要求更改, 增加端口, FCC改为镂空式	2010-5-18



FUNCTION TABLE:

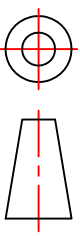
COM159	COM160
COM1	COM2
SEG73	SEG312

CONFIRM ALL TYPE DRAWINGS OF THIS AND PASS BACK!

OPERATING VOLTAGE: 3.3V	OPERATING CURRENT: 2.0mA
DISPLAY TYPE: FSTN, POSITIVE	POLARIZER MODE: TRANSPARENT
LCD DRIVE METHOD: 1/16DUTY 1/12BIAS 16.2V	VIEW DIRECTION: 6:00 O'CLOCK
LCD CONTROLLER: UC1698	BACK LIGHT: -
OPERATING TEMPERATURE: -20°C TO 70°C	STORAGE TEMPERATURE: -30°C TO 80°C
DEFAULT TOLERANCE: ±0.3	ROHS STANDARD: YES

Waying WAYING (HONGKONG) SHARES LIMITED

TITLE	模块外形图	CUSTOMER NUMBER	REV
DES' D BY		WM240160D-COG	B
CHK' D BY			
APPROVED		SCALE 1:1	UNIT mm
			DATE 2012-6-11
			NO. 1/1



NO.	SYMBOL
31	ESD
30	D15
29	D13
28	D8
27	D7
26	D6
25	D5
24	D4
23	D3
22	D2
21	D1
20	D0
19	RST
18	WR
17	RD
16	A0
15	G0
14	B0
13	B0
12	TEST4
11	VSS
10	VDD
9	VBO+
8	VB1+
7	VB1-
6	VBO-
5	VS-
4	VS+
3	VLCDIN
2	VLCDOUT
1	ESD